

# SPEC SHEET + MEASUREMENTS



Volunteer Knitwear™ Chore Fleece Full-Zip Hoodie.

VL130ZH

## Product photo



This hefty, true-blue fleece has a grittier, textured hand—plus it's crafted with durability to stand the test of time.

- 13-ounce, 80/20 cotton/poly
- 50/50 cotton/poly (Charcoal Heather)
- Proudly American made
- 1-panel hood with dart for fit
- Metal grommets with drawcords with knotted ends
- Twill neck tape
- Slightly forward shoulders
- Metal zipper
- 1x1 rib knit cuffs and hem
- Front pockets
- Side seamed
- Woven label

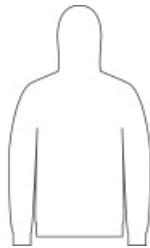
## CARE INSTRUCTIONS

Machine Wash Cold Inside Out With Like Colors. Use Non-Chlorine Bleach When Needed. Tumble Dry Low. Do Not Iron.

## Sketches



front



back

# SPEC SHEET + MEASUREMENTS



## Volunteer Knitwear™ Chore Fleece Full-Zip Hoodie. VL130ZH

### PRODUCT MEASUREMENTS

	S	M	L	XL	2XL	3XL	4XL
Body Length at Back	27 1/2	28 1/2	29 1/2	30 1/2	31 1/2	32	32 1/2
Chest	21	22 1/2	24	25 1/2	27	29	31
Sleeve Length from Center Back	35	35 3/4	36 1/2	37 1/4	38	38 3/4	39 1/2

**Body Length at Back:** Measured from high point shoulder to finished hem at back.

**Chest:** Measured across the chest one inch below armhole when laid flat.

**Sleeve Length from Center Back:** Measure from Center Back neck to shoulder point to sleeve hem.

### SIZE CHARTS

	S	M	L	XL	2XL	3XL	4XL
Chest	35-37	38-40	41-43	44-46	47-49	50-53	54-57

# SPEC SHEET + MEASUREMENTS

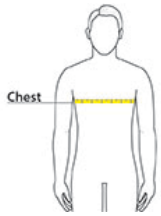


Volunteer Knitwear™ Chore Fleece Full-Zip Hoodie.

VL130ZH

## HOW TO MEASURE

---



### CHEST

Measure under the arm and around the fullest part of the chest with arms down, keeping tape horizontal.

## COLORS

---



Charcoal  
Heather



Deep Black  
PMS BLACK  
C



Heather Grey